

# PRODUCTS CATALOG



## SAENGVITH SCIENCE CO., LTD.

We are trading and importing scientific instruments company who are the representative of many U.S.A., European, also Asian companies.



## BUSINESS PERFORMANCE

SAENGVITH SCIENCE CO., LTD. is an expert in the supply and service of laboratory equipments. We import wide range of products from leading manufacturers in U.S.A., Europe and Asia to outfit unique requirement of applications for customer includes; universities, research institutes, institute of forensic science, medical centres, governmental organizations and businesses as well as heavy industries.

We offer array of X-ray fluorescence analysis equipments, sample preparation equipments, food safety diagnostic equipments, fat and oil analysis equipments, nuclear magnetic resonance and more. Our product list includes range of chemical reference standard, laboratory proficiency testing kits and forensic instruments.



## SERVICE

We utilise our knowledge and know-how to add value to products we sell by providing continuing application and technical support, from finding the right equipment to fit your application, installation service by experts as well as user training course to ensure the maximum performance of purchased equipment, and reliable maintenance/repair service by experienced technical team.







## CHEMICAL REFERENCE STANDARDS

สารเคมีมาตรฐาน

### ORGANIC SINGLE ANALYTES & SELECT MIXTURES

- **Persistent Organic Pollutants (POP) :**  
PCBS & metabolites, Halogenated aromatics, Dibenzo-p-dioxins, Dibenzofurans, PBDE congeners, PBBs metabolites & BFRs, PAHs & Derivatives, Nitrogen containing compounds, Pesticides & Herbicides
- **Volatile Organic Compounds (VOCs)**
- **Individuals by functional group :**  
Alcohols, Aldehydes & Derivatives, Ketones, Phenols, Amines, Anilines, Amino compounds, Ethers, Halo ethers, Haloacetic acids, Fatty acid ethyl ethers & Phthalates
- **Individuals by application :**  
Explosives, Fuels & hydrocarbons, **Plastic additives**, Food analytes (Methyl esters, glycerides, AOCS Methods, FAMES,
- **Cannabis and Hemp Testing Standards :**  
THC, THCA, CBDA, CBD, CBN, CBG, CBC, THCV, CBDV, Terpene standards

### ENVIRONMENTAL PROTECTION AGENCY (EPA)

- **Individuals analytes from EPA methods**
- **Contract Laboratory Program (CLP)**  
Volatiles, Semi-volatiles & Pesticides mixtures
- **500 series**  
for Drinking water
- **600 series**  
for Waste water
- **1300**  
TCLP (Toxicity Characteristic Leaching Procedure)



### REFERENCE STANDARDS FOR PLASTIC ADDITIVES

- Contains the most comprehensive list of Plastic and other polymeric standards Accelerants, Antidegradants, Antifoams, Antioxidants, Antiozonates, Blowing Agents, Coupling Agents, Cross-Linking Agents, Flame Retardants, Plasticizers, Processing Aids, Retarders, Stearates, UV Stabilizers, Vegetable Oils, & Deuterated

### INORGANIC STANDARDS & QC STANDARDS

- **Single Element : ICP, ICP/MS & AA**  
Pesticides & Herbicides
- **Ion Chromatography Standards**
- **Wet chemical**  
Turbidity, Alkalinity, Hardness, Conductivity, Oil & Grease, Biochemical BOD, COD & Solids
- **ICP & ICP/MS Multi – element Standards**
- **OrganoMetallics (Wear metals)**  
AA, ICP, DCP & XRF Analysis
- **Lubricating Oil Standards**
- **Inorganic ASTM Methods**

### REFERENCE STANDARDS FOR PETROCHEMICAL

- **Over 100 ASTM Methods D-56 to D-7065**  
(Cross Ref. IP, ISO, DIN, JIS, AFNOR Methods)
- **Physical properties**  
Flash point, Distillation, Viscosity, Aniline point, Freezing & Cloud point
- **Sulfur standard**  
Diesel Fuel, Residual Oil, Mineral Oil, Kerosene, Gasoline & Crude Oil
- **PIANO, PONA, PNA Analysis**  
n-Paraffins, Isoparaffins, Aromatics, Naphthenes & Olefins
- **BioFuels**  
ASTM D6584 / EN14105 Free & Total Glycerin, EN14103 Fatty Acids Methyl Esters (FAMES), Fatty Acid Ethyl Esters (FAEES), EN14214 Wear metals
- **Universal Oil Products (UOP)**
- **Total Petroleum Hydrocarbon (TPH) & Fuel & Hydrocarbon**





## PROFICIENCY TESTING WHAT IS LGC PROFICIENCY TESTING?

โปรแกรมการทดสอบความชำนาญห้องปฏิบัติการทดสอบและสอบเทียบ

Proficiency testing (comparative testing) is an important way of meeting the requirements of ISO/IEC 17025, ISO1400 etc. in the area of quality assurance of laboratory results. It is also mandated by accreditation bodies that laboratories participate in proficiency testing programs for all types of analyses undertaken in that laboratory, when suitable programs exist.

## BENEFITS OF PROFICIENCY TESTING PARTICIPATION INCLUDE

Monitor and improve quality of measurements Demonstrate competency to customers and accreditation bodies Inter-laboratory measurement comparisons Greater process control Staff development and training Evaluate methods and instrumentation

## SECTOR SPECIFIC SCHEMES WATER & ENVIRONMENTAL PROFICIENCY TESTING SCHEMES

- **AQUACHECK**  
wastewaters ,sludges,sediments soils, Chemical analysis of clean water
- **QWAS**  
Microbiological analysis of waters , effluents and sludge
- **CONTEST**  
Analysis of contaminated soils for a wide range of contaminants
- **STACKS**  
Analysis of samples resulting from periodic emission monitoring
- **AIR PT**  
Air & Stack Emissions
- **HYGIENE**  
Hygiene Surface Monitoring
- **CRYPTS**  
Cryptosporidium



## FOOD PROFICIENCY TESTING SCHEMES

- **QMS**  
Microbiological examination of food and food ingredients
- **QDCS**  
Composition and safety testing in the dairy sector
- **QMAS**  
Chemical and Microbiological analysis of meat products
- **QGS**  
Analysis of gelatin samples
- **QCS**  
Microbiological and chemical testing of chocolate
- **QFCS**  
Chemical testing of food products
- **QCS**  
Chemical and microbiological analysis for the chocolate industry
- **Animal Feeds**  
Chemical & Microbiological analysis of animal feed products
- **CONF-IDENT**  
Confirmation & Identification



# PROFICIENCY TESTING

## BEVERAGE PROFICIENCY TESTING SCHEMES

- **BAPS**  
Chemical and microbiological & sensory analysis of a range of beers
- **DAPS**  
Analysis of a wide range of alcoholic beverages (except beer)
- **QBS**  
Chemical and microbiological testing of soft drink
- **MAPS**  
Analysis of malt & barley used by the malting, brewing & distilling industries

## FORENSIC & CLINICAL EQA SCHEMES

- **DOF**  
Analysis of Heathcontrol Drug in Oral Fluid Scheme
- **DAU**  
Analysis of Heathcontrol Drug of Abuse in Urine Scheme
- **TDM**  
Analysis of Heathcontrol Therapeutic Drug Scheme
- **Toxicology**  
Analysis of Heathcontrol Toxicology Scheme
- **Forensics**  
Analysis of Alcohol in blood Drug profiles
- **CLS** : Clinical Laboratory Scheme
- **SAR** : SARS-CoV-2 Scheme
- **IPT**: Immunosuppressant Scheme
- **TDM** : Therapeutic Drugs Scheme
- **DAH** : Drugs of Abuse in Hair Scheme
- **QUARTZ** : Forensic Blood Toxicology Scheme
- **FAE** : Forensic Analysis for Explosives Scheme
- **FIRMS** : Forensic Isotope Ratio Mass Spectrometry Scheme

## OTHERS SCHEMES

- **QMIS**  
Identification of microorganisms
- **PHARMASSURE**  
Measurement of a range of analysis in pharmaceutical products used in hospitals
- **PHYTAS**  
Qualitative and quantitative analysis of botanical products
- **Cosmetics and Toiletries**  
Chemical and microbiological testing of Cosmetics and Toiletries
- **TOYTEST**  
Toy safety testing to The European Standard EN71 and ASTM F96
- **DAH**  
Drugs of Abuse in Hair Scheme
- **CANNABIS**  
Cannabis & Related Products
- **NiMS**  
Nickel Migration





# Certified Reference Materials (CRM) Standard Reference Materials (SRM)



*Excellence through measurement*



## REFERENCE MATERIALS FOR FOOD INDUSTRY

- **Milk & Milk products**  
Milk powder, Processed cheese, Whey powder & Infant Food
- **Meat & meat products**  
Beef, Pork, Lamb, Chicken, Fresh meat
- **Fish & Fish products**  
: Shellfish; Mussel tissue, Oyster tissue  
: Fish; Cod muscle, Tuna fish, Dogfish muscle
- **Cereals & genetically crops**  
Wheat, Corn, Rye, Rice & Rapeseed
- **Vegetable matter**  
Fruit & vegetables; Apple, Carrot, Tomato, Peanut butter

## REFERENCE MATERIALS FOR CLINICAL ANALYSIS & FORENSIC TOXICOLOGY

- **Reference Materials for Clinical Analysis**  
Blood, serum, urine with certified values of trace elements, hormones and vitamins.
- **Reference Materials for Forensic Analysis**  
Alcohols, steroids and drugs in blood, serum, urine and hair; deuterated and native forensic standard solutions.

## ENVIRONMENTAL ANALYSIS REFERENCE MATERIAL

- **Certified matrix reference materials for organic, inorganic, metals & nutrients analysis of**  
: Waters – Drinking, Rain, Fresh, Spilled / fortified Water  
: Sediments – Freshwater & Marine sediments  
: Soils & Sewage sludges

## REFERENCE MATERIALS FOR PHYSICAL PROPERTIES

- **Thermal properties**  
Melting, freezing & triple points Flash point & Vapour pressure
- **Particles & surface properties**  
Particle size, Surface area, Coating & Surface tension
- **Optical properties**  
Refractive index, Optical density, Photography & Microscopy

## PHARMACEUTICAL REFERENCE SUBSTANCES AND IMPURITIES MATERIAL

- **Reference substances from the world's Pharmacopoeia**  
United States Pharmacopeia, European Pharmacopeia, British Pharmacopeia, International Pharmacopeia, Certified pharmaceutical impurities



## CERTIFIED REFERENCE MATERIAL

### วัสดุอ้างอิง/สารละลายมาตรฐาน สำหรับการวิเคราะห์ สารป้องกัน และกำจัดศัตรูพืช

TRM (Thailand Reference Material) is a certified reference material issued by the National Institute of Metrology (Thailand), NIMT and its designated institute. TRM with a roof shape logo is a registered trademark of NIMT with the department of intellectual property, Thailand. TRMs are produced to the highest standards according to ISO Guide 34 ensuring their consistent quality. TRMs are produced with a well-defined traceability linkage to SI unit (Mole). The traceability is established via NIMT criteria using metrologically valid procedures for the certification of reference material given by NIMT.

## THAILAND REFERENCE MATERIAL (TRM)

### Inorganic Standard

- Secondary pH standards  
(Range:1.10, 1.68,4.01,6.86,7.01,9.18, 10.01,11.72)
- Zinc, Cadmium, Arsenic Standard Solution
- pH of ethanol
- Chloride, Sodium Standard Solution
- Secondary Electrolytic Conductivity Solution
- Potassium Dichromate Standard for Spectrophotometer



### Sucrose Standard

- Sucrose Standard Solution (% Brix)  
(0.01%, 0.02%, 0.03%, 0.04%, 0.05% Brix)  
(5.00%, 10.00%, 20.00%, 30.00%, 40.00%, 50.00%,60.00% Brix)



### Organic Standard

- Acaricide Pesticide
- Carbamate Pesticide
- Pyrethroid Pesticide
- Organochlorine Pesticide
- Organophosphate Pesticide
- Insecticide Pesticide
- Benzene, Ethylbenzene, Toluene, Xylene



### Gas Standard

- Gas Standard (Oxygen in Nitrogen)
- Carbon dioxide in Nitrogen
- Methane in Nitrogen
- Methane in Air
- Propane in Nitrogen
- Sulfur Dioxide in Nitrogen



### Matrix Reference Material Etc.

Food/ Clinical/ Environmental

- Element in Glutinous Rice Powder
- Trace and Essential Elements in Prawn
- Total Malachite Green in Freeze Dried Prawn
- Melamine in cracker
- Aflatoxins in Peanut Butter
- Clenbuterol in feed /Salbutamol in feed
- Element/Total Cholesterol in Frozen Human Serum
- Elements in Soil
- Mercury in Drinking Water
- Trace Elements in Drinking Water
- Element in Acrylonitrile Butadiene Styrene (ABS) Plastic



## To produce in Vitro test kits for clinical laboratories, veterinary practice and food industry.

Beta-Agonist residues in meat production are of great concern to regulatory agencies and consumers. Our selective immunoassays provide a fast and low cost method to assure the customers that food products are safe to go to market.

Biopanda Reagent's Rapid lateral flow immunoassay tests are a fast and effective way to detect Beta-Agonist residues in food products.

The test kits are for Clenbuterol, Ractopamine and Salbutamol. Also, Clen/ Rac/ Sal Triple Rapid test kit.

**Biopanda**  
Reagents





## Charm II

The Charm II system provides comprehensive food safety testing for multiple food matrices. It is used for milk, egg, fish, grain, honey, serum, tissue, urine, and water testing. Charm II is the choice of food industry laboratories and regulators around the world because of the wide variety of tests offered and the system's versatility, reliability and accuracy.



## Applications

- Multi-testing: Antibiotics, Aflatoxins, Pesticides, Alkaline, Phosphatase and ATP
- US, SL, MRL & CODEX level screening methods
- Multiple Antibiotic: Beta-lactams, Tetracyclines, Sulfonamides, Amphenicols, Chloramphenicol, Streptomycin, Macrolides, Aminoglycosides, Novobiocin

## Charm EZ System for Milk Testing



The Charm EZ system makes quick work of antibiotic and aflatoxin M1 testing in milk. Simply insert a ROSA lateral flow strip and add milk.

The system is configured with tests calibrated to US Safe Levels, EU, CODEX, and Customs Union MRLs.

## Charm EZ-M System for Grain Testing



The Charm EZ-M system reads any quantitative ROSA mycotoxin strip used for grain testing. Charm has ROSA tests for aflatoxin, DON (vomitoxin), fumonisin, ochratoxin, T-2/HT-2 and zearalenone that are GISPA certified.

Testing is so fast and simple to perform real-time analysis on raw ingredients as part of acceptance testing. By screening grains in the receiving area, food manufacturers can be assured that raw materials are of an acceptable quality.

## EPIC System



The Charm EPIC system is a microplate bioluminescence system that predicts spoilage in shelf-stable, ultra high temperature (UHT), and extended shelf life (ESL) beverage products. EPIC detects ATP, a bio-marker of microbiological quality. The system can screen beverage products in 24 to 36 hours. It can be tested in white milks, flavored milks, soy beverages, creams, yogurt-based drinks, ice cream and condensed milk.

## Novalum II



**Advanced Sensitivity** The novaLUM®II ATP detection system utilizes a technologically advanced photomultiplier tube (PMT) that is more sensitive to ATP (adenosine triphosphate) presence allowing detection of lower levels of microbial and organic matter contamination. This is a distinct advantage over systems that use less sensitive PMTs or photodiodes. The novaLUM II system's PMT has low noise, a greater dynamic range, a faster response time, and accuracy over a wider temperature range.



Heat sensitive metabolites, isomers and complex molecules retain their composition as they are not degraded by heat or pressure.

## FREEZER/ MILLS

Freezer mills 6875D



Freezer mills 6875



Freezer mills 6775



- Particle size reduction
- Cryogenic grinding
- Tissue homogenization DNA/RNA extraction
- Pressing & pelletizing
- Sample handling for XRF

## What is Cryogenic Grinding?

- The Ultimate Sample Preparation Technique for Pulverizing "Difficult" Samples
- Grinding materials at low temperatures.
- Liquid Nitrogen  $-196^{\circ}\text{C}$
- Not degrade by heat pressure

## "Ungrindable" samples can be pulverized

- Leaves, roots, stems, seeds (cotton, sunflower, corn), Polymers, rubber, silicones
- Fibers, hair, textiles
- Skin, bone, muscle, cartilage, etc.
- Food products, paint chips, pharmaceuticals Gums, resins, waxes
- Electronic components
- Tough food, feed materials (dog chews)

## CryoBlade CG-900



Breakthrough, automated processing from bulk to test portions in 15 minutes or less

- High-throughput - process up to 1 kg of sample per run
- Efficient - complete a method in 15 minutes or less
- Versatility - capability to use liquid nitrogen or dry ice to process your sample  
Cryo accessories for low temperature (e.g. RNA extraction)
- Safety - automated dispensing of liquid nitrogen eliminates the handling and manipulation of liquid nitrogen (patent pending)
- 230 VAC operation

## GENO/GRINDER®



- The ultimate tissue homogenizer
- Used in many applications:
- Pesticide extraction and other food analysis  
Plant and animal research  
Pharmaceutical  
DNA extraction  
Etc.
- Cryo accessories for low temperature (e.g. RNA extraction)



Mini G



MIXER MILL 8000D



Enclosed  
Shatter Box 8550



X-PRESS 3636

ZenoTOF 7600 System



TRIPLE QUAD SYSTEMS



QTRAP SYSTEMS



X500R QTOF SYSTEMS



## MASS SPECTROMETER

### ● TRIPLE QUAD SYSTEMS

The Triple Quad 6500 System, exceedingly sensitive, sharply focused – all backed by the integrity and quality of the SCIEX brand.

### ● X500R QTOF SYSTEMS

The X500R QTOF system is the first robust, high-performance, high resolution MS system designed for routine food, environment, and forensic testing.

X500R QTOF  
SYSTEMS



### ● QTRAP SYSTEMS

The SCIEX QTRAP System deliver new and exciting discoveries for identification, characterization and quantitation of your samples. From high throughput analysis to detailed analyte investigations, the QTRAP system goes beyond your expectations.



SCIEX  
7500 System

### ● ZenoTOF 7600 System

Driven by the power of the Zeno trap coupled with EAD fragmentation technology to unlock sensitivity gains that reveal previously inaccessible. Detect up to 20x more ions in every experiment and access a spectrum of tunable fragmentation techniques to uncover new perspectives for every molecule, in every experiment.

#### APPLICATION :

- Environmental
- Food & Beverage
- Metabolisms
- Proteomics
- Clinical Research
- Drug Discovery

### ● Triple Quad™ 7500 LC-MS/MS System - QTRAP® Ready

The SCIEX 7500 System can enable new levels of quantification across a large suite of sample types and workflows.

**GO BEYOND** the current limits of sensitivity, productivity targets, ruggedness and robustness challenges. **GO BEYOND** with the SCIEX Triple Quad™ 7500 LC-MS/MS System QTRAP® Ready.

- Forensic Drugs Testing
- Lipidomics



# COMPLETE SOLUTIONS FOR SAMPLE PREPARATION

## SPE-DEX® 3100 Oil & Grease Automated Extractor

Compliant with EPA Method 1664A 1664B and APHA 5520G  
Process samples simultaneously directly from original sample bottle  
Accommodates a wide range of sample bottles  
Regulates sample processing and disk drying times

## Applications of SPE-DEX® 3100 Oil & Grease Automated Extractor

For extraction oil & grease from a wide range of clean and dirty aqueous samples

The Speed-Vap™ III Solvent Evaporation System provides safe and fast evaporation of n-Hexane solvent for oil & grease extractions.



## SPE-DEX® 5000 AUTOMATED EXTRACTION SYSTEM

### SAMPLE HANDLING

Use the bottle of your choice for easier implementation  
Rinses the bottle for best analyte recoveries  
Accommodates 40 mL-2 L samples for all sensitivity needs

### SAMPLE WITH PARTICULATES

- The Fast Flow disk holder is designed to collect particulates before the SPE disk, maintaining flow and characterizing the whole sample
- Includes method steps to clean the system between samples
- Never lose a sample with detection systems to pause the run for user intervention when an unsatisfactory situation is detected
- Run even complex samples without emulsions forming; the power of SPE at work!

### Application of Automated SPE Extractor

Environmental: separate semivolatile and nonvolatile compounds from liquids matrices.



## BIOTAGE® VACMASTER™ DISK Disk Extractor Unit

### Overview

- Single station manual extraction unit
- Single port vacuum manifold applies vacuum to the outlet of a solid phase extraction disk to assist in the extraction of aqueous or viscous samples
- Suitable for extracting semi/nonvolatile organic compounds and n-hexane extractable material (HEM) from water samples
- Simple 3-way valve separates aqueous, organic and chlorinated organic solvent waste

### Solvent Resistance

Resistant to solvents commonly used for extraction:

- Acetone
- Acetonitrile
- Chloroform
- Pentane
- Diethyl ether
- Ethanol
- Ethyl acetate
- Heptane
- Hexane
- Isooctane
- Isopropanol
- Methanol
- Water
- Methyl tert-butyl ether (MTBE)
- Dichloromethane (methylene chloride)
- Acidified Water (pH 2.0) acidified with HCl



## TurboVap® Evaporators

### Fast Evaporation with Patented Vortex Technology



#### TurboVap® LV

Evaporation of either 24 or 48 position mode with independent control of flow in each row.

Compatible with tube sizes ranging from 10 to 32 mm and from 32 up to 165 mm in length. Acid resistant version available.

#### TurboVap® II

Evaporates six 50 or 200 mL samples with independent vial control. Automatic sensors detect when the solvent reaches the end-point volume and automatically stop the evaporation. Acid resistant version available



#### Biotage® PRESSURE+

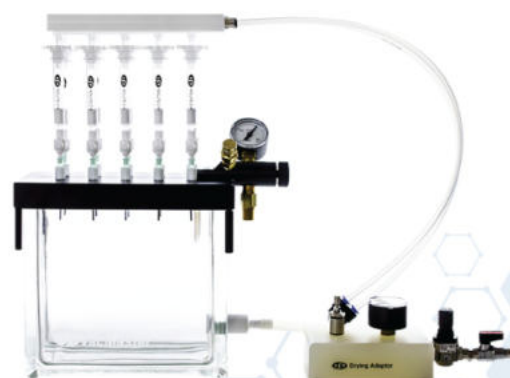
#### Positive Pressure for Smarter Sample Prep

Biotage® PRESSURE+ manifolds deliver positive pressure, parallel processing for 96 well plates, 1 mL 3 mL and 6 mL column formats. The systems utilize a consistent, uniform flow of positive pressure to move both low and high viscosity liquids through SPE plates and columns.

Each port of the manifold independently maintains constant pressure, increasing the overall reproducibility of analyte recoveries.

#### Vacuum Manifolds for Columns

Biotage® VacMaster™ Sample Processing Manifolds allow up to 10 (VacMaster-10) or 20 (VacMaster-20) SPE or filtration columns to be processed simultaneously under vacuum. Easy to use vacuum controls provide excellent sample flow control, leading to reproducible, reliable extraction conditions.



- ISOLUTE SPE Columns and 96-well plates
- ISOLUTE SLE
- ISOLUTE QuEChERS
- ISOLUTE Ion Exchange Columns & Plates
- ISOLUTE Specialty Columns & Plates
- EVOLUTE Polymeric Columns & Plates





**Gold Standard Diagnostics** is a global network of companies with decades of experience on the test kit, reagent and instrument development and manufacturing market. We provide fast, reliable, and easy to use diagnostic assays and instruments in the fields of bioanalytical testing for the food, feed, environmental, biopharma, animal health and clinical industries.



### Instruments:

- Automatic ELISA analyzer
- LFD Test strip reader
- ELISA reader
- Automated extraction platforms



### Our broad range of rapid test kits cover:

- Allergens
- Food Pathogen
- Viruses
- GMOs
- Mycotoxins
- Veterinary Drugs Residues
- Animal Species
- Veterinary Diagnostics
- Environmental and Water Testing

### Available testing methods:

- ELISA kits
- Lateral flow tests
- PCR kits
- Sampling Devices
- Immunoaffinity Columns



## imChem HPLC columns



Our range of Surf, 3 $\mu$ m and 5 $\mu$ m analytical columns is dedicated to research and analysis. It is completed by a range of semi-preparative Surf columns, in 5 $\mu$ m and 10 $\mu$ m. In parallel, we offer a new analytical HPLC range, Shaper, in 3 $\mu$ m and 5 $\mu$ m, with higher resolution. To complete the range, we also have a range dedicated to scale-up, Coral, from 5 to 50  $\mu$ m.

## imChem Vials and Filters



## imChem GC Capillary Columns



All our columns are manufactured from a tube of fused silica, a material that is both extremely pure and possesses very strong chemical inertia. Its polyimide coating guarantees it the flexibility typical of capillaries used for gas chromatography.

We attach a great deal of importance to the selection of the tube, a stage that is critical for the rest of the process.

## NeoSpectra™ by Si-Ware

### Handheld NIR Analyzer



The rugged and easy-to-use handheld NeoSpectra Scanner brings lab-grade material analysis to measures protein, oil, moisture and more in seconds in the production line or field. Thousands of ready-to-use models from the NeoSpectra LabStore get you up and running quickly. Powered by the NeoSpectra Scan mobile application, you can be analyzing samples accurately only 3 easy steps:

1. Download the Scan Apps to mobile.
2. Connect scanner with Bluetooth
3. Select calibrations from the NeoSpectra LabStore and Ready!

The NeoSpectra Scanner is like a laboratory in your hand ready to bring instant insights into your processor production line to ensures reliable results from anywhere.



# PETROLEUM AND PETROCHEMICAL TESTING EQUIPMENT



VISCOSITY



FLASH POINT



CENTRIFUGE



REID VAPOR PRESSURE



ASTM

## FUELS

- Automotive Gasolines
- Aviation Fuels
- Biodiesel Fuels
- Burner, Diesel & Industrial Gas Turbine Fuels
- Diesel Fuels
- Fuels Oils
- Aviation Turbine Fuels Containing Synthesized Hydrocarbons
- Kerosene
- Liquefied Petroleum Gas (LPG)



SOFTENING POINT



FOUR BALL WEAR AND EP

## LUBRICANTS

- Aircraft Engine Lubricant
- Automatic Transmission Fluid
- Automotive Engine Oil
- Automotive Lubricating Grease
- Gear Oils
- Hydraulic and Metalworking Fluids
- Steam Turbine Lubrication Oils
- Turbine Oils and Synthetic Lubricants



DISTILLATION



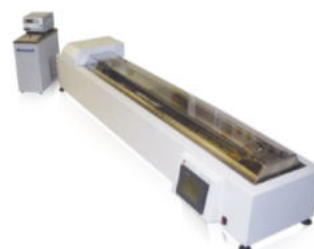
OXIDATION STABILITY



OIL SEPARATE

## OTHER PRODUCT

- Bituminous Materials (Including Waxes)
- Electrical Insulating Oils
- Solvents



DUCTILITY



AUTOMATIC TITRATION

## X-RAY FLUORESCENCE ANALYZER: EDXRF



LAB-X5000

- The easiest, fastest and more versatile LAB-X ever
- Software and hardware are optimized for high throughput testing
- User interface is inspired by our leading line of point and shoot handheld analyzers
- The large industrial-grade touch screen is resistant to chemicals and clearly displays results and controls
- Atmospheric compensation allows all measurements to be taken in air path, eliminating the cost of external gases
- LAB-X5000 complies with ASTM D4294, ISO 8754, ISO 20847 and IP 336.



X-Supreme8000

- Minimal or no sample preparation
- Unattended operation, and it can be used by non-laboratory operators
- Focus SD technology for speed, accuracy and long-term reliability
- Flexibility to perform qualitative, semi-quantitative and full quantitative analysis
- X-Supreme8000 complies with ASTM D4294, ISO8754, ISO20847 and ISO13032 test methods



## X-RAY INSTRUMENT FROM THERMO FISHER SCIENTIFIC



### **ARL™ EQUINOX 100 X-ray Diffractometer**

Get a dedicated XRD instrument designed for QA/QC, academic, and routine X-ray diffraction applications with the compact, affordable Thermo Scientific™ ARL™ EQUINOX 100 X-ray Diffractometer. Occupying a third of the space of a conventional diffractometer, this stand alone, transportable benchtop instrument offers true flexibility. No external water cooling is required, and it plugs into a standard electrical power outlet.

### **ARL X'TRA Companion X-ray Diffractometer**

Perfectly designed to be a cost-effective solution for routine QC/QA in industrial laboratories. Thanks to its state-of-the-art solid-state 2D detector, high resolution data is collected within minutes.

This robust and accurate benchtop X-ray diffractometer comes with one-click Rietveld quantification capabilities and automated result transmission to a LIMS, and it complies with international X-ray safety regulations.



### **Wavelength Dispersive XRF (WDXRF)**

The Thermo Scientific™ ARL™ 9900 WDXRF Spectrometer provides all the benefits of wavelength dispersive x-ray fluorescence (WDXRF), one of the most versatile methods for elemental analysis of solids and liquids.

The system is available in four preconfigured packages specifically suited for analysis in the petroleum, cement and slags industries or for multi-purpose requirements in analytical laboratories.



## ALPHA II

The FTIR spectrometer ALPHA II is the advancement of its very successful predecessor. The ALPHA II combines outstanding quality with compactness and user convenience. With its integrated touch panel PC and its intuitive OPUS Touch software, FTIR spectroscopy has never been easier. Technical innovations increase the ALPHA II's performance and robustness even further. The fully integrated design of the ALPHA II makes it perfect for efficient routine analysis and the quality control of industrial products.



## INVENIO

INVENIO is the next generation intelligent R&D FTIR spectrometer. With the optional touch panel, the innovative MultiTect™ detector technology bearing up to 5 detectors, the Transit™ channel for quick MIR transmittance, the additional user exchangeable DigiTect™ detector slot, the novel optics design with many unique features for highest flexibility and performance, INVENIO R makes your daily work in demanding analytical and R&D application fields more enjoyable



## LUMOS II

The LUMOS II FTIR microscope keeps following that creed. Its hardware, software and user interface were built around the idea, that even beginners should obtain exceptional results in a minimum amount of time. The motivation behind this is obvious: in order to benefit from its universal applicability, the user must first be empowered to take advantage of FTIR imaging and microscopy.





# 3D DIGITAL MICROSCOPE FOR TOTAL IMAGING SOLUTIONS

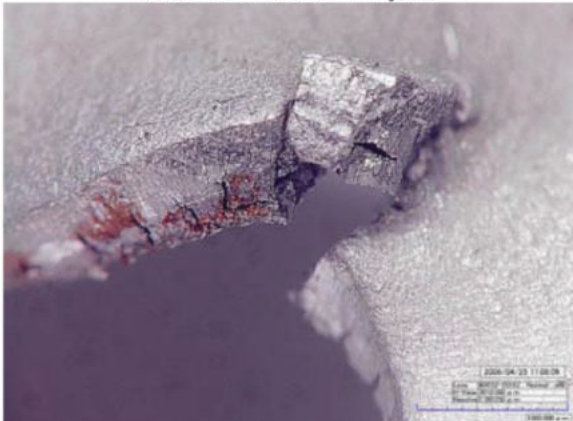
## HiROX



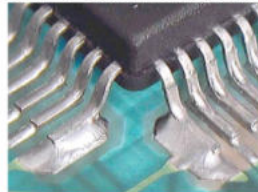
HRX-01 / RX-100

- 1 - 10,000x Magnification
- 2D and 3D Measurement
- Point Height Measurement
- Volume and Area Measurement
- Roughness Measurement
- Auto Focus / Movie recorder
- Auto Calibration Select Sensor
- 360 Degree View Rotary Head
- Big Depth of Field
- Long Working Distance
- Continuously Zoom-in Focused
- Variable Observe Angle (25-55 Deg)
- Multi Layer Focus
- Live HDR & Automatic Optimisation
- New 5.0 Mega pixel CMOS chip supporting with 50 frames per second
- Running on 4K window PC
- Real-Time Measurement
- Anti-Vibration (Camera Stabilization)
- New Motorized Lenses

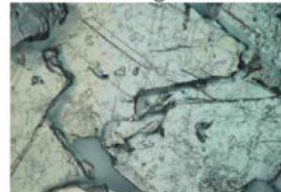
Material/ Failure Analysis



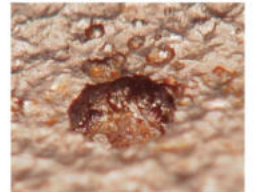
SMT / Semiconductor



Metallic Organization



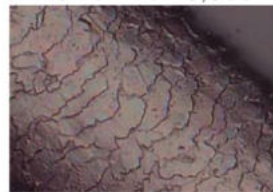
Metal Corrosion



Genetics



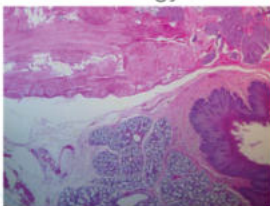
Human Hair 3,500x



Human Skin Hair



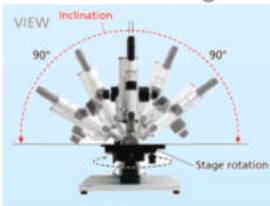
Biology



Non Contact Lens



Rotation Stage



360 Degree observation



Handy Contact lens



## Applications

Forensic, Museum, Automobile, Gemology, Medical/Pharmaceutical, Petroleum Research, Borne Piece – Archaeology, Automobile, Mintage, Gemology, Agriculture, Quarantine, etc.

# FORENSICS MICROSCOPE SYSTEM

## FIREARMS AND TOOL MARKS COMPARISON MICROSCOPE



### The Leeds Discover-Z

Leeds, the Discovery-Z providing the motorization of both stages and the focus movement. These new stages allow the examiner to measure sample features in both the X and Y axis on both the left and right-hand stages. The Discovery-Z was designed to enhance the workflow for a firearms examiner. In addition, the Discovery-Z offers over 900 matched magnification set points and 23mm field of view.



### Discovery-trace

Introducing the Trace-Z, a powerful trace evidence comparison microscope encompassing Zeiss optical components. The Trace-Z is designed for forensic science and other applications which require side-by-side comparison of various specimens. The Trace-Z, incorporating world-class optics, offers a unique, 23mm field of view, the largest field of view in the forensic marketplace. The Trace-Z can be configured for brightfield, darkfield, polarized light, phase contrast, fluorescence, and other contrast methods.



### LCF3

The LCF3 is built with world-class Olympus apochromatically corrected optics, providing crisp, aberration-free, high-resolution images. The macro bodies, with a 16:1 zoom ratio and built-in aperture diaphragms, provide the examiner with 14 matched magnification positions to choose from. The optics are paracentric and parfocal throughout the zoom range. Optional objectives are available to provide alternate magnification ranges and working distances for the examiners.





# FORENSIC SCIENCE



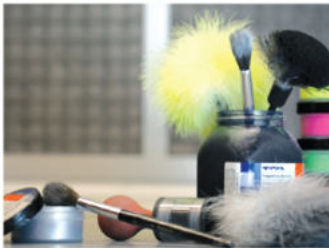
## FUME CARE

The Cyanoacrylate Fuming Chamber is used to develop latent prints from non-porous surfaces in a controlled and safe environment. The ductless design allows immediate use. Simply plug-in and go.



## Master&Twins Bullet Recovery Systems

The bullet recovery water system is used for the firearms identification.



## BYDA

- Fingerprint powder
- Magnetic powder
- Fingerprint ink
- Footprint GEL
- Mikrosil casting putty kit



## TRITECH FORENSICS

- Fiberglass latent print brush
- Flat camel hair latent print brush
- Rabbit latent print brush
- Latent print magnetic powder applicator
- Phenolphthalein blood test kit
- Single cardholder unit



## CRIME SCENE INVESTIGATION EQUIPMENT

- Evident paper/plastic bag
- Evident tape, tag and seal
- Scale and measurement device
- Crime Scene Investigation protection



## BLUESTAR® UNIQUE FORENSIC

- BLUESTAR® FORENSIC® Latent Blood Reagent
- BLUESTAR® OBTI® (formerly: Hexagon OBTI)



## HEMASTIX PRESUMPTIVE BLOOD TEST

## Serie of ARACUS

The serie of ARACUS works according to gold standard of post column derivatization with ninhydrin, with detection at 440 nm and 570 nm using maintenance free LED photometers.

A separation of up to 44 amino acids in about one hour is possible, but also of a few amino acids within a few minutes. The series of ARACUS is used in clinical laboratory (e.g. IVD-newborn screening), in quality control for Food, Beverages and Feedstuff and in Research

### 2 patents granted

- DE102016010887B3
- DE102018108312A1



# AMINO ACID ANALYZER



## ULTRAPURE WATER SYSTEMS

The membraPure range of ultrapure water systems are manufactured in Germany and globally recognised as proven technology for producing laboratory grade water, for over 25 years.

The Aquinity<sup>2</sup> system is designed for the production of pure ( $< 0.2 \mu\text{S/cm}$ , Type 2) and ultra pure ( $0.055 \mu\text{S/cm}$ , Type 1) water and is the perfect solution for every laboratory ensuring practical, reliable and cost effective supply of high purity lab water.

The Astacus<sup>2</sup> system is designed for the production of ultra pure water ( $0.055 \mu\text{S/cm}$ , Type 1 water) and is the perfect solution for every laboratory ensuring practical, reliable and cost effective supply of ultrapure lab water, all in a compact and innovative design.



### Magnetic stirrer

#### Magnetic stirrer with Heating

เครื่องกวนสารละลายโดยใช้แม่เหล็ก พร้อมให้ความร้อน



RCT basic



RCT Control



RH digital



C-MAG HS 4



C-MAG HS 7

### Incubator shakers

เครื่องเขย่าผสมสารพร้อมระบบควบคุมอุณหภูมิ



KS 3000 i control / ic control



KS 4000 i control / ic control

### Rotary Evaporators

IKA's rotary evaporator's award winning design and performance will make a significant difference in your laboratory. The IKA range of RV 3, RV 8, RV 10 digital, RV 10 auto and RV 10 auto pro rotary evaporators offers excellent distilling solutions to the demanding user. Value for money, design and technology - all for your convenience!

# memmert

Experts in Thermostatics

## trust the best

ADVANCED PELTIER TECHNOLOGY



### Universal Oven

Temperature range up to  $+300^{\circ}\text{C}$   
2 model variants: SingleDISPLAY and TwinDISPLAY  
Natural convection(UN) or forced air circulation (UF)

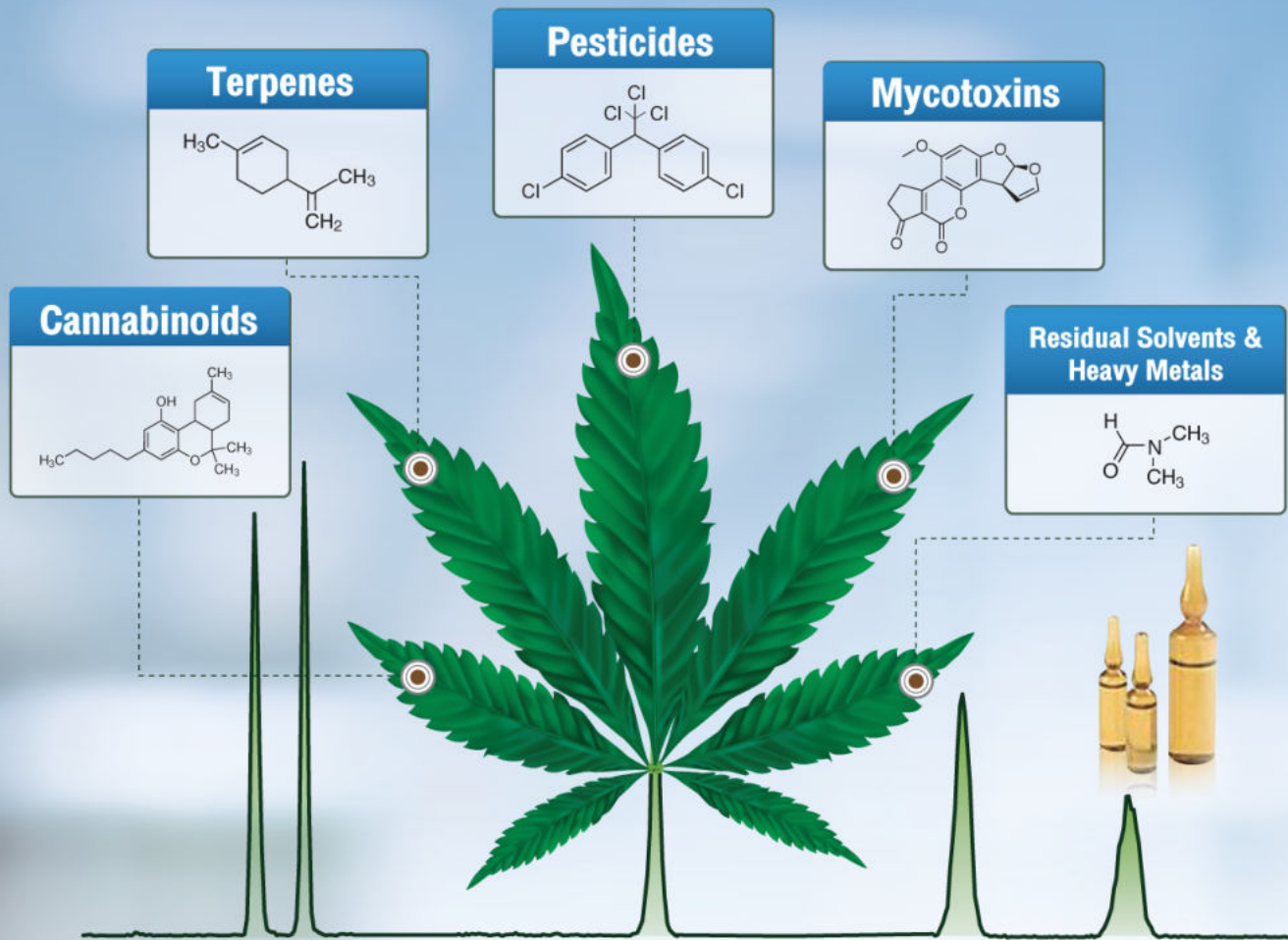


### Peltier-cooled incubator

Temperature range  $0^{\circ}\text{C}$  up to  $+70^{\circ}\text{C}$   
2 model variants: SingleDISPLAY and TwinDISPLAY  
double doors standard for all models  
fans integrated in the Peltier elements ensure rapid energy transfer and optimum temperature distribution



# Cannabis Analysis Solutions



**Cole-Parmer®**  
spex sampleprep

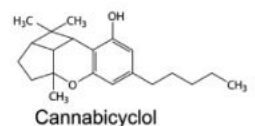
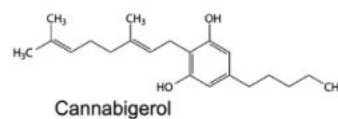
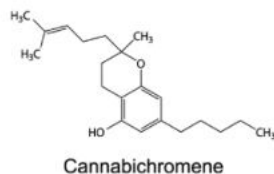
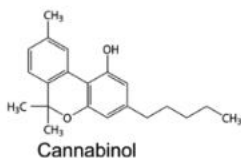
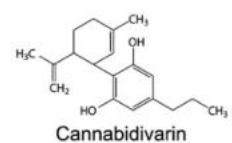
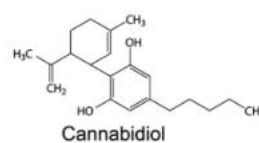
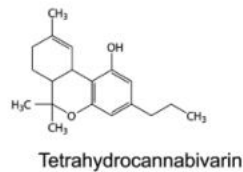
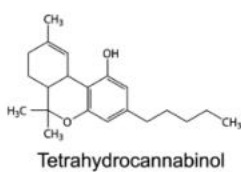
Sample Preparation

เครื่องบดตัวอย่างกัญชา



## CANNABINOID STANDARDS AND CRMS สารมาตรฐานกัญชา

Structural formulas of main natural cannabinoids





## SAENGVITH SCIENCE CO., LTD.

123/4-5 Soi. Somdetphrapinklao 9, Somdetphrapinklao Road,  
Arun Amarin, Bangkoknoi, Bangkok 10700 Thailand  
Tel. : (+662) 886-9200-7 Fax. : (+662) 433-9168  
E-mail : [info@saengvithscience.co.th](mailto:info@saengvithscience.co.th), [saengvith.sc@anet.net.th](mailto:saengvith.sc@anet.net.th)  
Website : [www.saengvithscience.co.th](http://www.saengvithscience.co.th)